

## **How do I choose whether the Forum or Chat Room is best for me to use?**

### **What is a Forum?**

A message board published specifically for Building Control Practitioners, with open registration available to all.

- Post messages, questions, queries etc. from any internet linked PC. Or post replies, answers, comments etc.
- Common topics are linked and displayed together (threaded) and then archived. All topics are fully searchable for future reference, or to update as required.
- An area is set aside for test messages, try it out and make a few test postings - access is free and unrestricted!

### **What is a Chat Room?**

Use your PC like a telephone - but type your conversation.

- Invite an unlimited number of people in a 'real time' discussion. Or arrange a 1 to 1 private conversation.
- Members using the Chat Room at any one time are listed for your reference, and to give access for private connections.
- When all the occupants log off, all comments are cleared ready for the next discussion.

### **Can't get Access?**

Some networked systems with an activated Firewall may restrict access to some services. Talk to your Service Provider, or your Network Administrator.

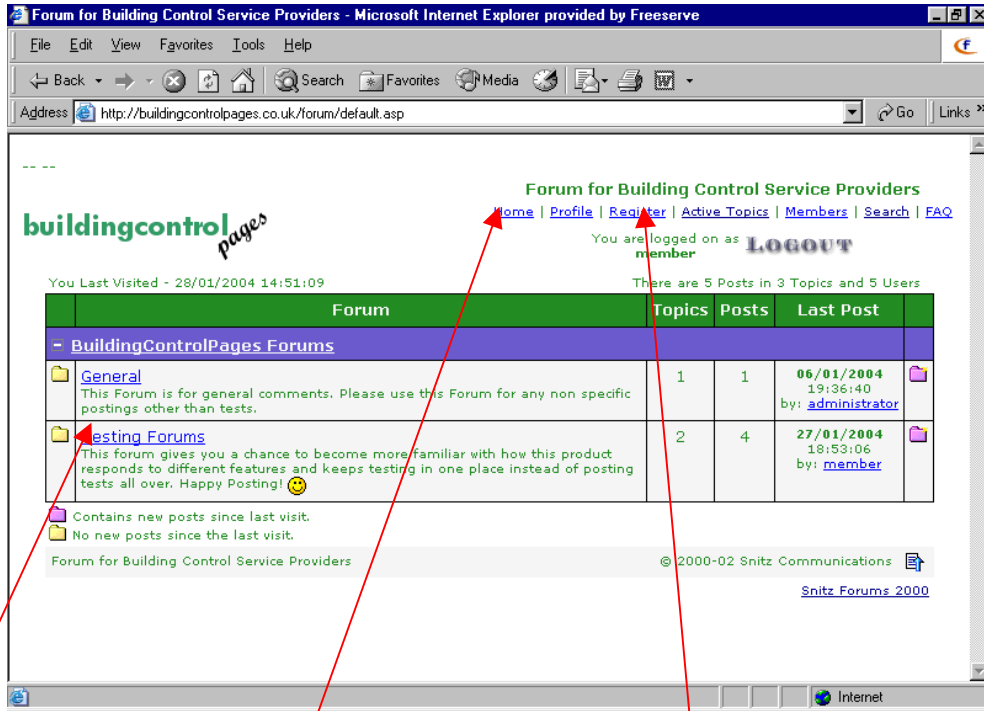
## **buildingcontrolpages - Forum Guide**

### **Notes:**

- This guide is intended for visitors to buildingcontrolpages who may not be familiar with the use of threaded types of on-line forum.
- Enter this forum via [www.buildingcontrolpages.co.uk](http://www.buildingcontrolpages.co.uk) and follow link to Forum, or go directly to [www.forum.buildingcontrolpages.co.uk](http://www.forum.buildingcontrolpages.co.uk)
- This guide is intentionally graphic for convenience and clarity
- Much of the functionality of this forum has been disabled temporarily, but may be introduced at a future date.
- All visitors to this site have unrestricted access to view comments within the forum
- Additional functions are available (post replies, comments, new topics etc) following registration to the forum (see screen 4).

**REGISTRATION TO THE FORUM IS INDEPENDENT OF REGISTRATION TO THE MAIN SITE**

## SCREEN 1



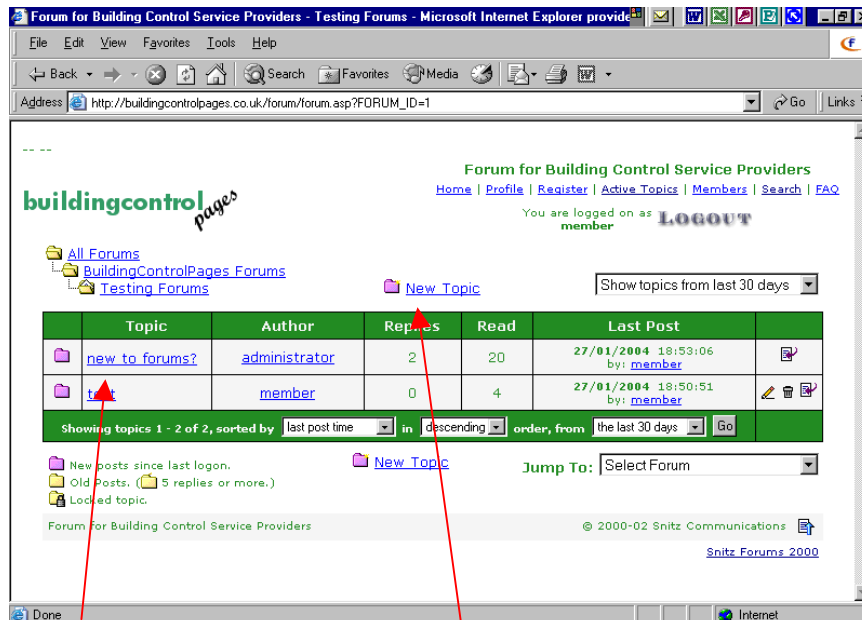
Links to forums

Link to register as a new user

Link to buildingcontrolpages homepage

**CLICK ON LINK TO FORUMS TO SEE TOPICS**

## SCREEN 2

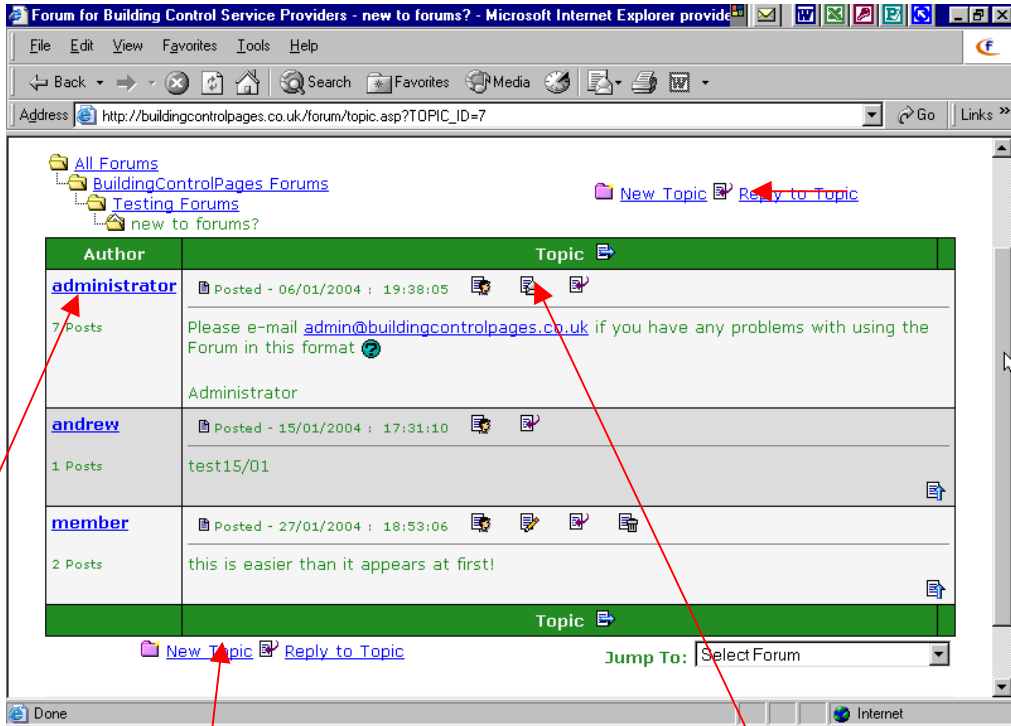


Links to Topics

Link to start a new Topic

**Click 'TOPIC' to view comments**

**SCREEN 3**

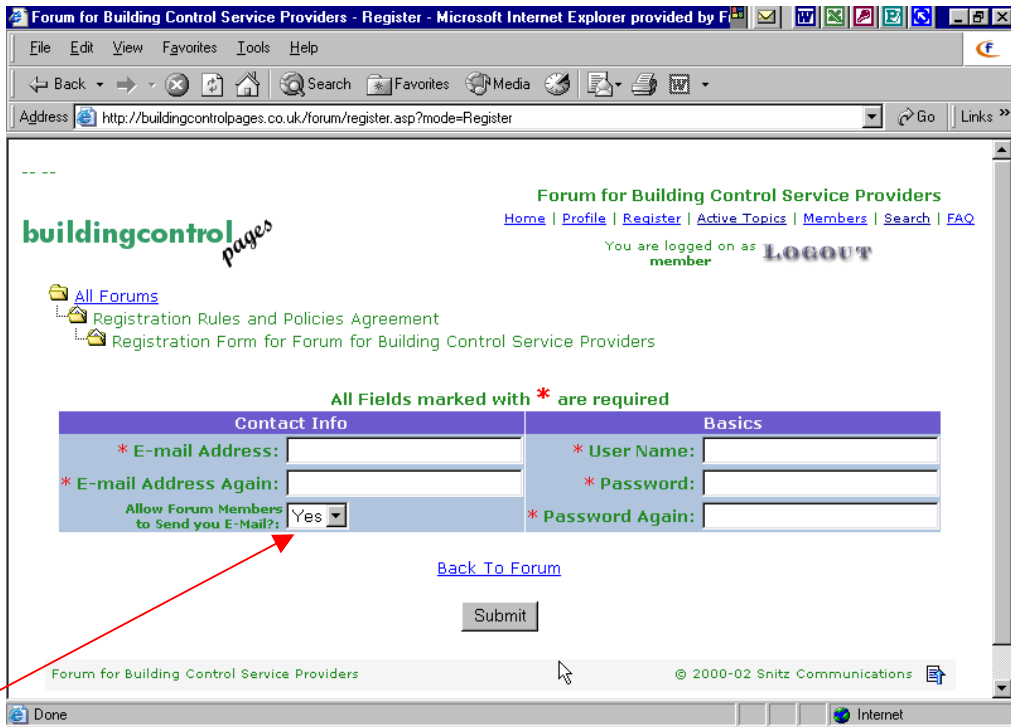


Your user name

Each post reply/amend/quote links

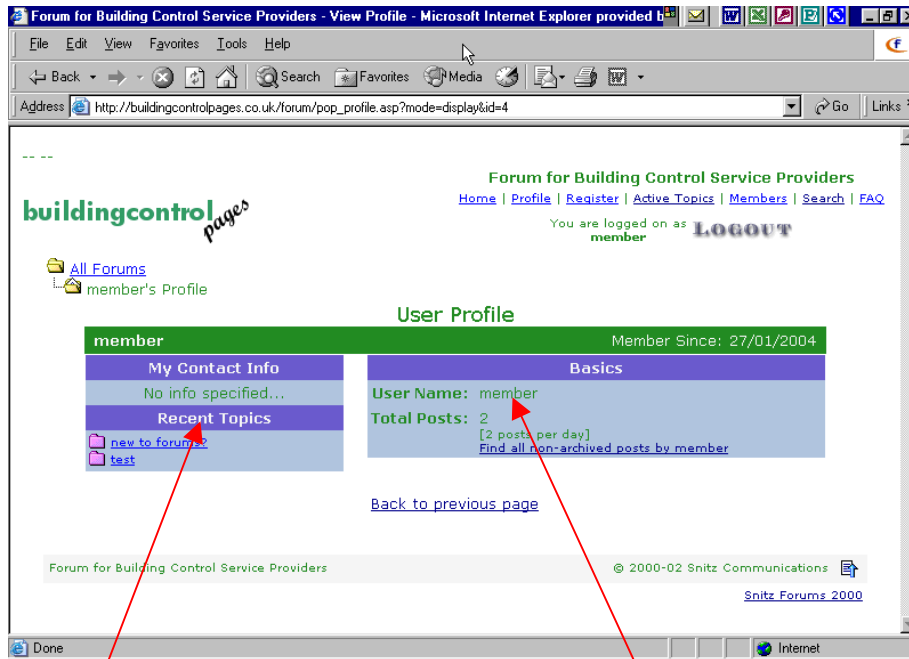
Links to reply to Topic or start a new Topic

**SCREEN 4**



Select 'NO' to keep your e-mail addresses private  
All fields on the registration screen are mandatory

## SCREEN 5



User name appears here and on all postings  
Your e-mail appears here at your discretion

**PLEASE REMEMBER TO LOG OUT AFTER EACH SESSION** - thank you